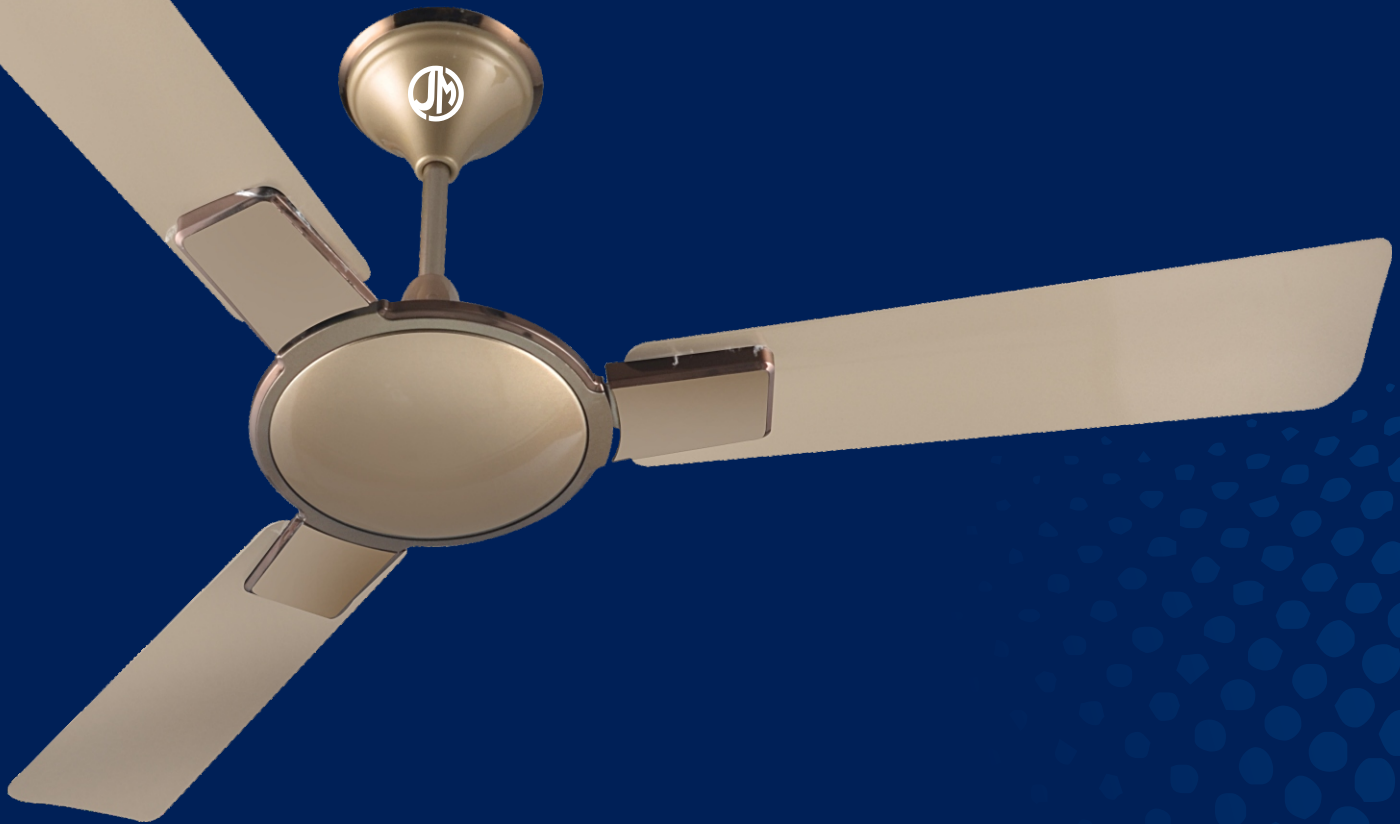


FAN CATALOGUE 2020



JOHN MAC
A P P L I A N C E S



GERMAN TECHNOLOGY

About Us :

Company Profile Established in 1988, As Aman Cables Industry which is manufacture of RELAXO cable and wires the prental company of Sagar Enterprises, which have reputed brand JOHN MAC Appliances and organization in Indian domestic Market. The company has been a leading manufacturer and supplies quality electrical appliances like Ceiling Fan, Exhaust Fan, Fresh Air Fan, All purpose Fam, Electric Iron, Geysers etc. to the Customers as per ISI specifications.

At JOHN MAC, there has been always a trust for technical advancements; it always goes for the latest state-of-th art technology and aesthetic looks. The aim of the company is to manufacture quality & reliable electrical appliances to customers entire satisfaction. As a commitment towards quality the company took ISI mark for its product range. With a short span of time the company has expended its capacity & capabilities to meet market demand & quality requirements. Now JOHN MAC is accepted as an established name for quality electrical appliances in the market. The company is now ISO 9001-2000. Besides fulfilling the domestic demands the company is a seeking to export in International Market, especially in SAARC counties the company has a wide client base and hopes for spread across the whole of Asia in future







BUZZ

48" (1200 mm)

Colour :

Golden / White / Ivory / Brown

FEATURE

- Sweep (MM) : 1200
- Air Delivery (CMM) : 210
- Voltage : 230
- Speed (RPM) : 350
- Blades A Set of : 3 Pcs.



Double Ball Bearing



Heavy Duty Motor



Copper Winding



HI SPEED



TEJAS

48" (1200 mm)

Colour :

Golden / White / Brown

FEATURE

- Sweep (MM) : 1200
- Air Delivery (CMM) : 210
- Voltage : 230
- Speed (RPM) : 410
- Blades A Set of : 3 Pcs.



Double Ball Bearing



Heavy Duty Motor



Copper Winding

HI SPEED



KRISH PLUS

48" (1200 mm)

Colour :
Mettalic Brown / Ivory / White & Blue
White & Pink / White & Grey

FEATURE

- Sweep (MM) : 1200
- Air Delivery (CMM) : 210
- Voltage : 230
- Speed (RPM) : 410
- Blades A Set of : 3 Pcs.



Double Ball Bearing



Heavy Duty Motor



Copper Winding



HI SPEED



FIESTA PLUS

48" (1200 mm)

56" (1400 mm)

Colour :

White / Ivory / Metallic Brown / Brown

FEATURE

- Sweep (MM) : 1200
- Air Delivery (CMM) : 210
- Voltage : 230
- Speed (RPM) : 410
- Blades A Set of : 3 Pcs.



Double Ball Bearing



Heavy Duty Motor



Copper Winding

HI SPEED



LOVELY PLUS

48" (1200 mm)

Colour :
Golden / Silver / Metallic Brown

FEATURE

- Sweep (MM) : 1200
- Air Delivery (CMM) : 210
- Voltage : 230
- Speed (RPM) : 410
- Blades A Set of : 3 Pcs.



Double Ball Bearing



Heavy Duty Motor



Copper Winding



374
EST

JOHN MAC
APPLIANCES



KIDDY

48" (1200 mm)

Colour :
Pink / Green

FEATURE

- Sweep (MM) : 1200
- Air Delivery (CMM) : 210
- Voltage : 230
- Speed (RPM) : 350
- Blades A Set of : 3 Pcs.



Double Ball Bearing



Heavy Duty Motor



Copper Winding

HI SPEED



THUNDER DLX PLUS

48" (1200 mm)

Colour : White / Brown / Ivory

FEATURE

Sweep (MM) : 1200
Air Delivery (CMM) : 210
Voltage : 230
Speed (RPM) : 410
Blades A Set of : 3 Pcs.



Double Ball
Bearing



Heavy Duty
Motor



Copper
Winding



FLAIR

48" (1200 mm)

Colour :

Brown / Ivory / White

FEATURE

- Sweep (MM) : 1200
- Air Delivery (CMM) : 210
- Voltage : 230
- Speed (RPM) : 350
- Blades A Set of : 3 Pcs.



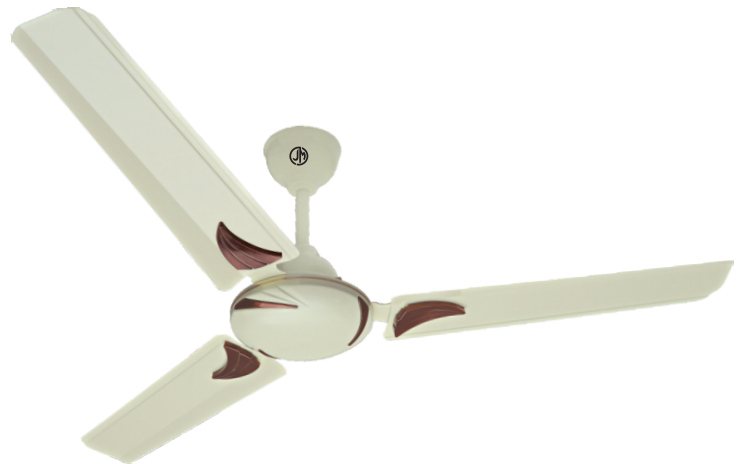
Double Ball Bearing



Heavy Duty Motor



Copper Winding



NEW POLO DLX

48" (1200 mm)

Colour : White & Silver / Ivory / Brown

FEATURE

- Sweep (MM) : 1200
- Air Delivery (CMM) : 210
- Voltage : 230
- Speed (RPM) : 350
- Blades A Set of : 3 Pcs.



Double Ball Bearing



Heavy Duty Motor



Copper Winding



374
LST



HI SPEED



HIGH BREEZE

48" (1200 mm)

Colour :

White / Brown / Ivory

FEATURE

Sweep (MM) : 1200

Air Delivery (CMM) : 210

Voltage : 230

Speed (RPM) : 410

Blades A Set of : 3 Pcs.



Double Ball Bearing



Heavy Duty Motor



Copper Winding



LEHAR DLX

48" (1200 mm)

Colour : White / Brown / Ivory

FEATURE

- Sweep (MM) : 1200
- Air Delivery (CMM) : 210
- Voltage : 230
- Speed (RPM) : 350
- Blades A Set of : 3 Pcs.



Double Ball Bearing



Heavy Duty Motor



Copper Winding



LEHAR

48" (1200 mm)

Colour :
Golden / White / Brown

FEATURE

- Sweep (MM) : 1200
- Air Delivery (CMM) : 210
- Voltage : 230
- Speed (RPM) : 350
- Blades A Set of : 3 Pcs.



Double Ball Bearing



Heavy Duty Motor



Copper Winding



IKON

48" (1200 mm)

56" (1400 mm)

Colour : White / Matt. Brown / Ivory / Coffee

FEATURE

- Sweep (MM) : 1200
- Air Delivery (CMM) : 210
- Voltage : 230
- Speed (RPM) : 350
- Blades A Set of : 3 Pcs.



Double Ball Bearing



Heavy Duty Motor



Copper Winding



POLO

48" (1200 mm)

Colour :
White / Brown / Ivory

FEATURE

- Sweep (MM) : 1200
- Air Delivery (CMM) : 210
- Voltage : 230
- Speed (RPM) : 350
- Blades A Set of : 3 Pcs.



Double Ball Bearing



Heavy Duty Motor



Copper Winding



ENERGY

48" (1200 mm)

Colour :
White / Brown / Ivory

FEATURE

- Sweep (MM) : 1200
- Air Delivery (CMM) : 210
- Voltage : 230
- Speed (RPM) : 350
- Blades A Set of : 3 Pcs.



Double Ball Bearing



Heavy Duty Motor



Copper Winding



36" CEILING FAN MODEL



HIGH BREEZE



THUNDER DLX PLUS



IKON

36" (900 mm)

Colour :
White / Brown / Ivory

FEATURE

- Sweep (MM) : 900
- Air Delivery (CMM) : 210
- Voltage : 230
- Speed (RPM) : 600
- Blades A Set of : 3 Pcs.



Double Ball Bearing



Heavy Duty Motor



Copper Winding

56" CEILING FAN MODEL

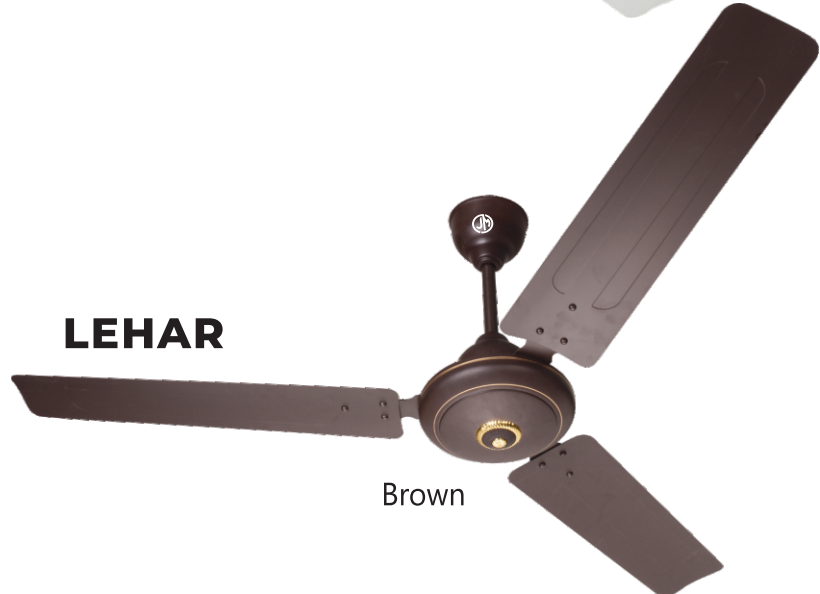


FIESTA PLUS



IKON

White



LEHAR

Brown

56" (1400 mm)
Colour : White / Brown

FEATURE

- Sweep (MM) : 1400
- Air Delivery (CMM) : 210
- Voltage : 230
- Speed (RPM) : 300
- Blades A Set of : 3 Pcs.



Double Ball Bearing



Heavy Duty Motor



Copper Winding



374
LST



HI SPEED



LITTLE FIESTA

24" (600 mm)

FEATURE

- Sweep (MM) : 600
- Air Delivery (CMM) : 210
- Voltage : 230
- Speed (RPM) : 900
- Blades A Set of : 4 Pcs.



LITTLE IKON

24" (600 mm)

FEATURE

- Sweep (MM) : 600
- Air Delivery (CMM) : 210
- Voltage : 230
- Speed (RPM) : 900
- Blades A Set of : 4 Pcs.



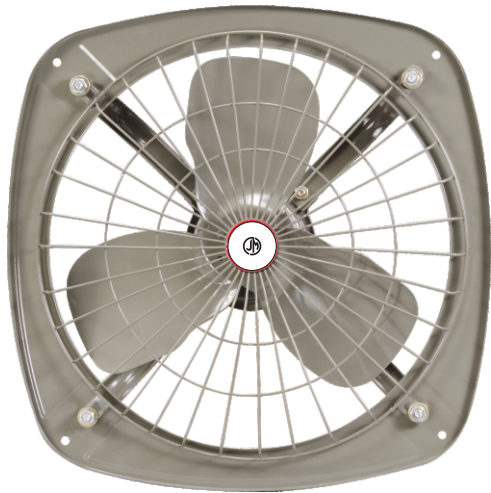
Double Ball Bearing



Heavy Duty Motor



Copper Winding



FRESH AIR FAN

ZOLTA

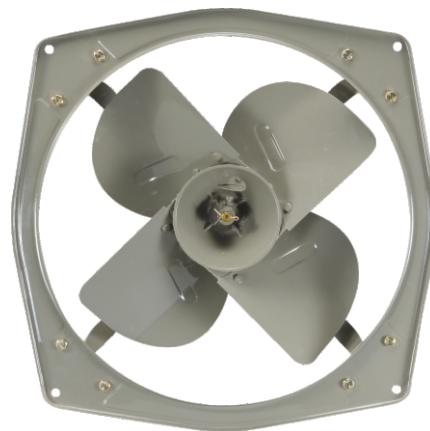
9" / 12 "

- ◆ Metal Blade
- ◆ Copper Winding
- ◆ High Speed

TRANS AIR FAN

9" / 12 "

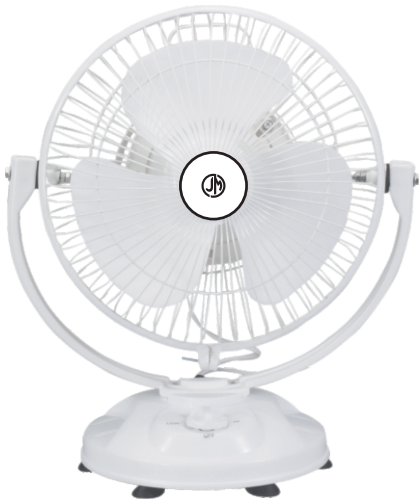
- ◆ Metal Blade
- ◆ Copper Winding
- ◆ High Speed



VENTILATION FAN

6" / 8 " / 10

- ◆ Plastic Blade
- ◆ Copper Winding
- ◆ High Speed



IKON

9" (225 mm)

FEATURE

- Plastic Body
- Copper Winding
- High Speed



PRINCE

16" (400 mm)

FEATURE

- Plastic Body
- 3 Speed / Revolving
- Copper Winding



PRINCE

12" (300 mm)

FEATURE

- Plastic Body
- 3 Speed / Revolving
- Copper Winding

WALL FAN

12" / 16" (300 / 400 mm)

3 Speed / Revolving

FEATURE

- Sweep (MM) : 300/400
- Power Consumption : 120W
- Voltage : 220/240
- Speed (RPM) : 2200



Double Ball Bearing



Heavy Duty Motor



Copper Winding

PEDESTAL FAN RANGE



KRISH

20" (500 mm)

Colour : Grey

- ◆ Metal Body
- ◆ Heavy Duty Motor
- ◆ 3 Speed
- ◆ Copper Winding

RAFTAR

16" (400 mm)

Colour : White

- ◆ Plastic Body
- ◆ 3 Speed
- ◆ Heavy Duty Motor



IKON

16" (400 mm)

Colour : White

- ◆ Plastic Body
- ◆ 3 Speed
- ◆ Heavy Duty Motor
- ◆ Revolving





HEAVY DUTY EXHAUST FAN



GOLD

15" (375 mm)

18" (450 mm)

Colour : Grey

FEATURE

Double Ball Bearing

Aluminium Body

Single Phase

GEC

15" (375 mm)

18" (450 mm)

Sweep : 450 mm

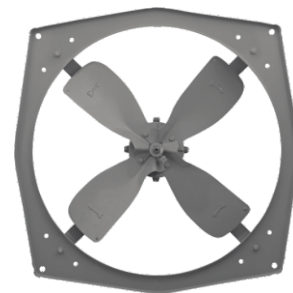
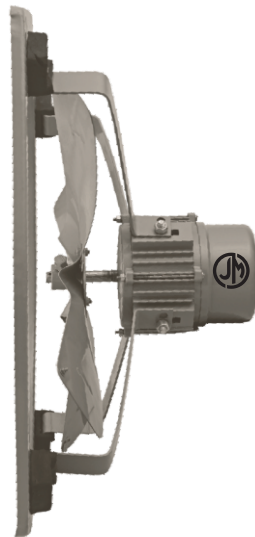
Colour : Grey

FEATURE

Double Ball Bearing

Aluminium Body

Single Phase



Double Ball Bearing



Heavy Duty Motor



Copper Winding

COOLER KIT & SUBMERSIBLE PUMP

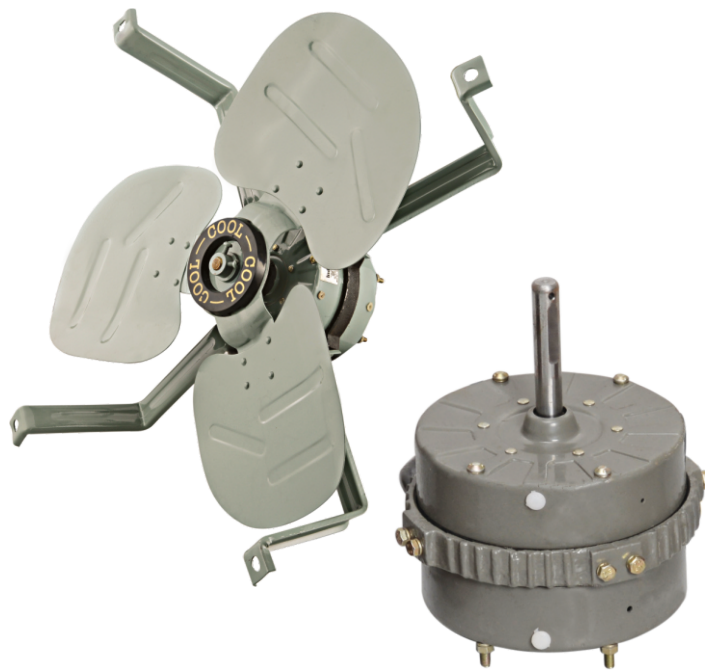
COOLER KIT

20"

Colour : Grey

FUTURE

- ◆ Wattage : 105w
- ◆ RPM : 1400
- ◆ Copper Winding
- ◆ Heavy Duty Motor
- ◆ Metal Blade w/leg & Ring.



SUBMERSIBLE PUMP



FUTURE

- ◆ Wattage : 38w(0.5HP)
- ◆ RPM : 2800
- ◆ CC Winding
- ◆ Water lifting capacity : 6 feet

1 Year Warranty



ELECTRIC WATER HEATER SERIES

ROYAL SERIES

Size : 6, 10, 15, 25, 35, 50 ltr.

Colour : Ivory / White

FEATURE :

Stainless Steel / Copper Inner Container

Overlap Welding SS Tank

Powder Coated

E.T.C. Technology

Extra Long ISI Heating Element

Thermal cutout ISI marked Thermostat

Pressure Relief Valve



FIESTA SERIES

REHEATING TIME CLOSED BY					
1 Ltr.	3 Ltr.	6 Ltr.	10 Ltr.	15 Ltr.	25 Ltr.
Instant	Instant	45 min.	55 min.	70 min.	80 min.

Size : 1, 3, 6, 10, 15, 25 ltr.

Colour : White / Blue

ABS Body

External Temperature Control

Steel Tank Low Carbon - 304

FEATURE :

Performance : 220-240 V. AC 50Hz

Power : 230 / 50 Hz AC

Mixing Factor Closed Type : 40%

Consumption Watts : 2.0 / 3.0 KW

Hot Water Output : 40°C



ELECTRIC WATER HEATER COPPER TANK SERIES

GOLD SERIES

Size : 15 / 25 Ltr. only

Available in : ABS & CRC Body



LPG GAS GYSER (INSE)

KRISH Fully Automatic

FUTURE

- ◆ Instant hot water flow
- ◆ Gas saving mode
- ◆ Constant water flow mode
- ◆ Zero pressure start





HEAT CONVECTOR & IMMERSION ROD SERIES

KRISH Fan Heater

FEATURE

- Cool Touch Housing
- Two Heat Setting 1000/2000W
- Special Heating Element
- Desired Room Temperature
- Cool Touch handle for easy nobility
- Automatic Thermal Safety Cut-Out
- International Style Designing



FLAIR Fan Heater

FEATURE

- Two Heat Setting 1000/2000
- Adjustable thermostat control
- Power Indicator light
- Over heat safety cut-out
- Cool airflow summer use
- Fitted with 16 amp. top



CRETA

Available in :
1000 / 1500 / 2000 watt.

FEATURE

- Water Proof
- Elegant Design



IMMERSION ROD SERIES

FLORA

Available in :
1000 / 1500 / 2000 watt.

FEATURE

- Non Water Proof
- Elegant Design









JOHN MAC
A P P L I A N C E S

www.johnmacfans.com